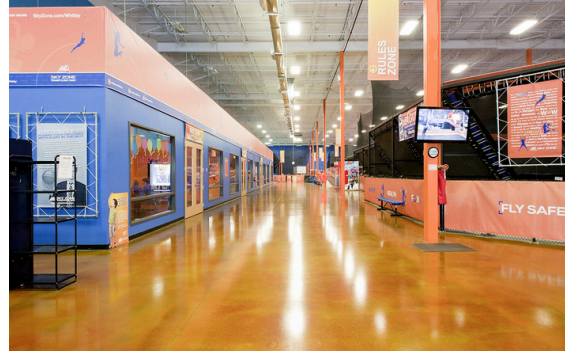




COMMERCIAL CONTRACTING
FOXCONLTD.COM

Sky Zone

Toronto / Mississauga / Vaughn / Whitby



PROJECT
21,000 to
30,000 sq. ft.

CLIENT
Sky Zone Indoor
Trampoline Parks

TEAM
Project Manager // David Waddell
Primary Consultant // MODO, Lori Urwin
Electrical Engineer // ESTI Consultants
Mechanical Engineer // HCC Engineering

DESCRIPTION

Sky Zone created the world's first indoor all-trampoline, wall to wall playing courts. Since their affiliate opened the first Sky Zone Indoor Trampoline Park in 2004, they have opened over 100 parks across North America and Australia.

Constructing a trampoline park requires special customizations and extra safety precautions. Some of the highlights of the facilities include:

- Custom trampolines & 45 degree trampolines
- Dodgeball, Skyslam (basketball) & foam (landing) courts
- Reception area, offices & party rooms in each location
- Mississauga location converted from an indoor soccer facility
- Whitby location finished with polished concrete

Fox Contracting has been working with Sky Zone since 2011 on four separate locations throughout the GTA. All projects were completed on time and on budget.